

CTPark Novi Sad



ctp

RS

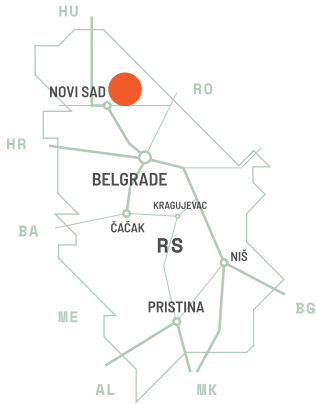
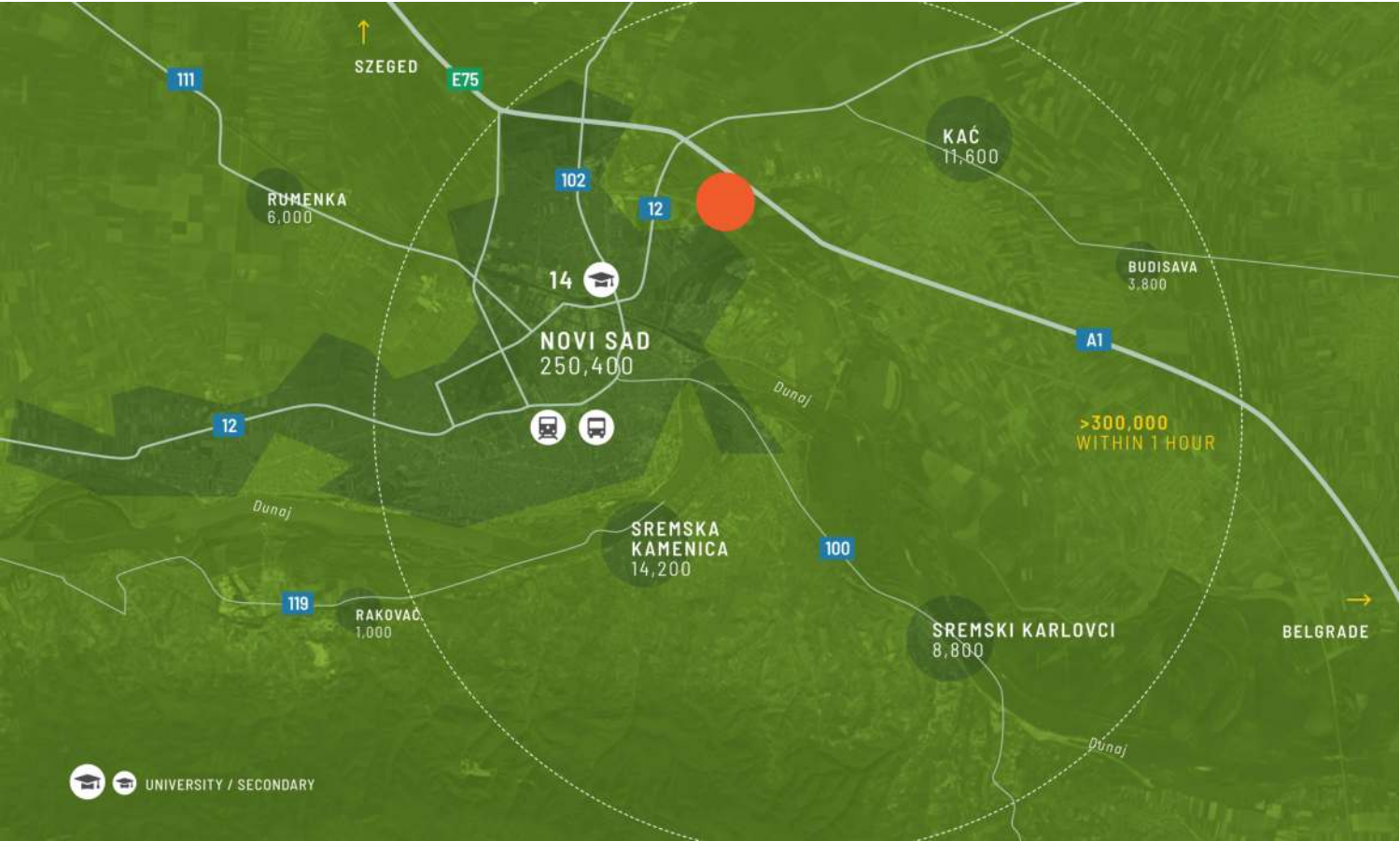
Novi Sad

Novi Sad is Serbia's second most populous city located in the northern part of the country. With Belgrade (80km) and the Hungarian (100km), Croatian (40km) and Romanian (130km) borders are all 1.5 hour proximity, the city is well connected with motorways. Furthermore, it offers a port on the Danube. The trade and service sector in Novi Sad is developing rapidly, attracting domestic and foreign investors. The city offers numerous advantages for business, including favorable conditions for investments and a developed industrial zone. The presence of renowned universities, leading among them the University of Novi Sad with technical and technological faculties, creates favourable conditions for the development of industry and innovation. A qualified workforce, together with a stimulating business environment, makes Novi Sad attractive for various economic sectors.

- Area ad alta disoccupazione/basso salario
- 600,000 people within 50 km radius
- 50,000 students at 14 univesities in nearby Novi Sad

GRANDI CITTÀ

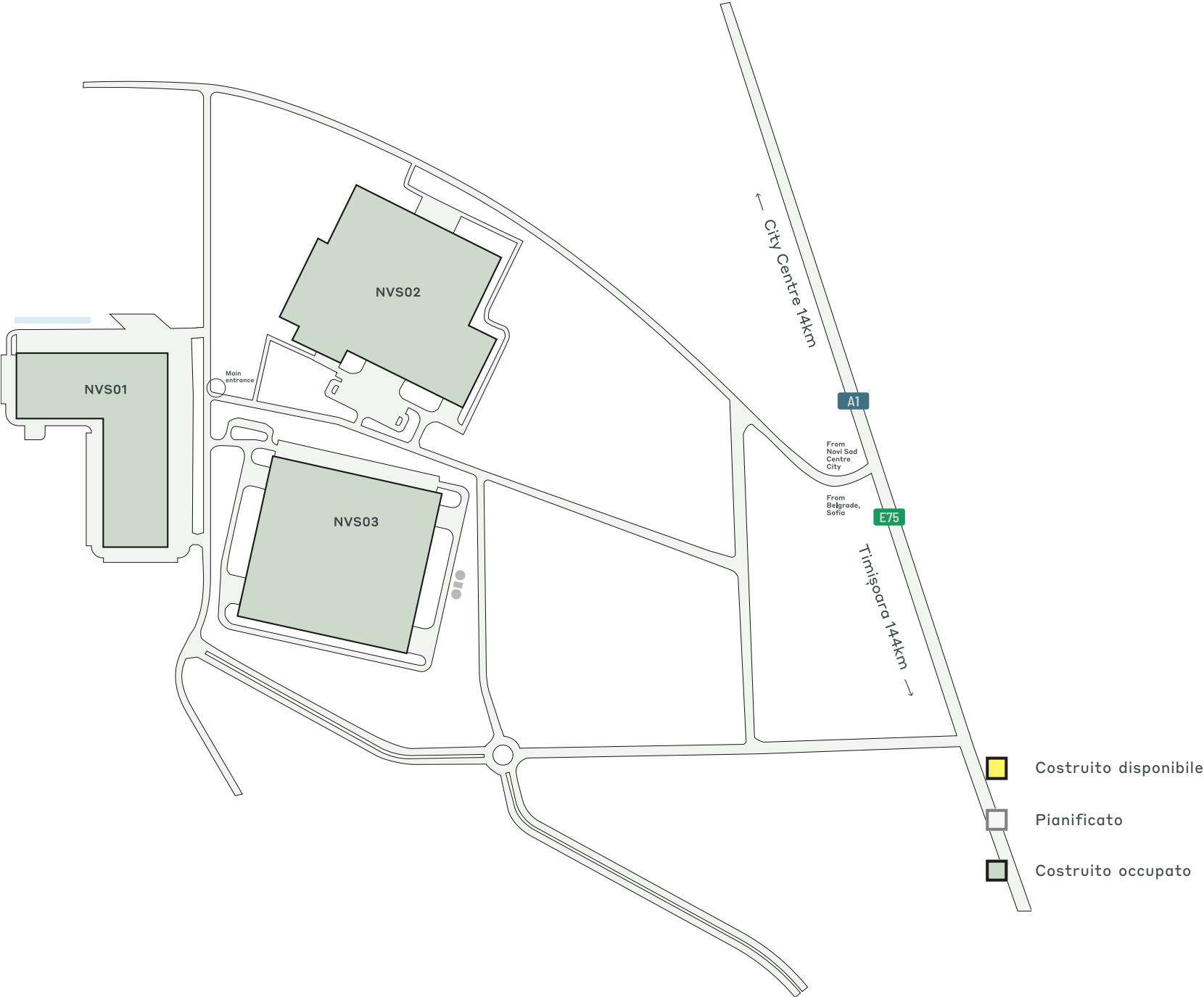
Belgrado	80 km
Budapest	300 km
Zagreb	378 km
Sofia	480 km
Bucarest	690 km



CARATTERISTICHE DEL PARCO

- ▶ 80 km northwest of Belgrade.
- ▶ Close proximity to the EU market.
- ▶ Near A1 highway.
- ▶ Industrial and financial centre.





DATI CHIAVE DEL PARCO

CTPark Novi Sad

DISPONIBILI ORA

0 m²

OPPORTUNITÀ DI SVILUPPO

0 m²

AREA EDIFICATA

70.500 m²

SUPERFICIE TOTALE

27,42 ha

INVESTITORI DEL PARCO E NELLE
VICINANZE

Univer Export

Aptiv

Lear Corporation

Barry Callebaut

BMTS

Continental

Nidec

ctp

ctPark NETWORK

WHERE YOU NEED TO BE

10 countries

TRACK RECORD OF SUCCESS

13.8 mil. sqm
GLA

SPACE FOR YOU TO GROW

25.7 million sqm
landbank

SPACE FOR YOU TO GROW

~1,500 clients

KEY

- CTParks
>100,000 sqm GLA
- CTP locations
<100,000 sqm GLA
- Mixed-use Parks
- Planned

MARKETS

- Core markets
- Growth markets
- Western European markets



Jovan Dobric
Business Developer, Central
Serbia Region

+381 66 88 89 563
jovan.dobric@ctp.eu

CONTATTAMI