

ctp



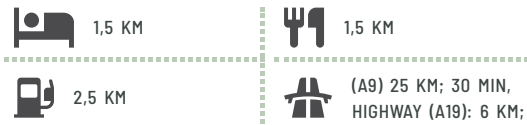
DE

CTPark Eichstätt

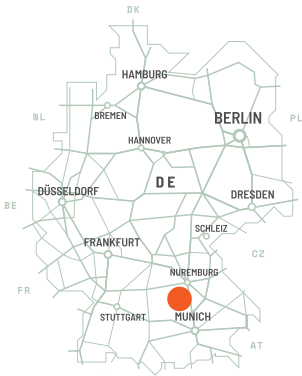
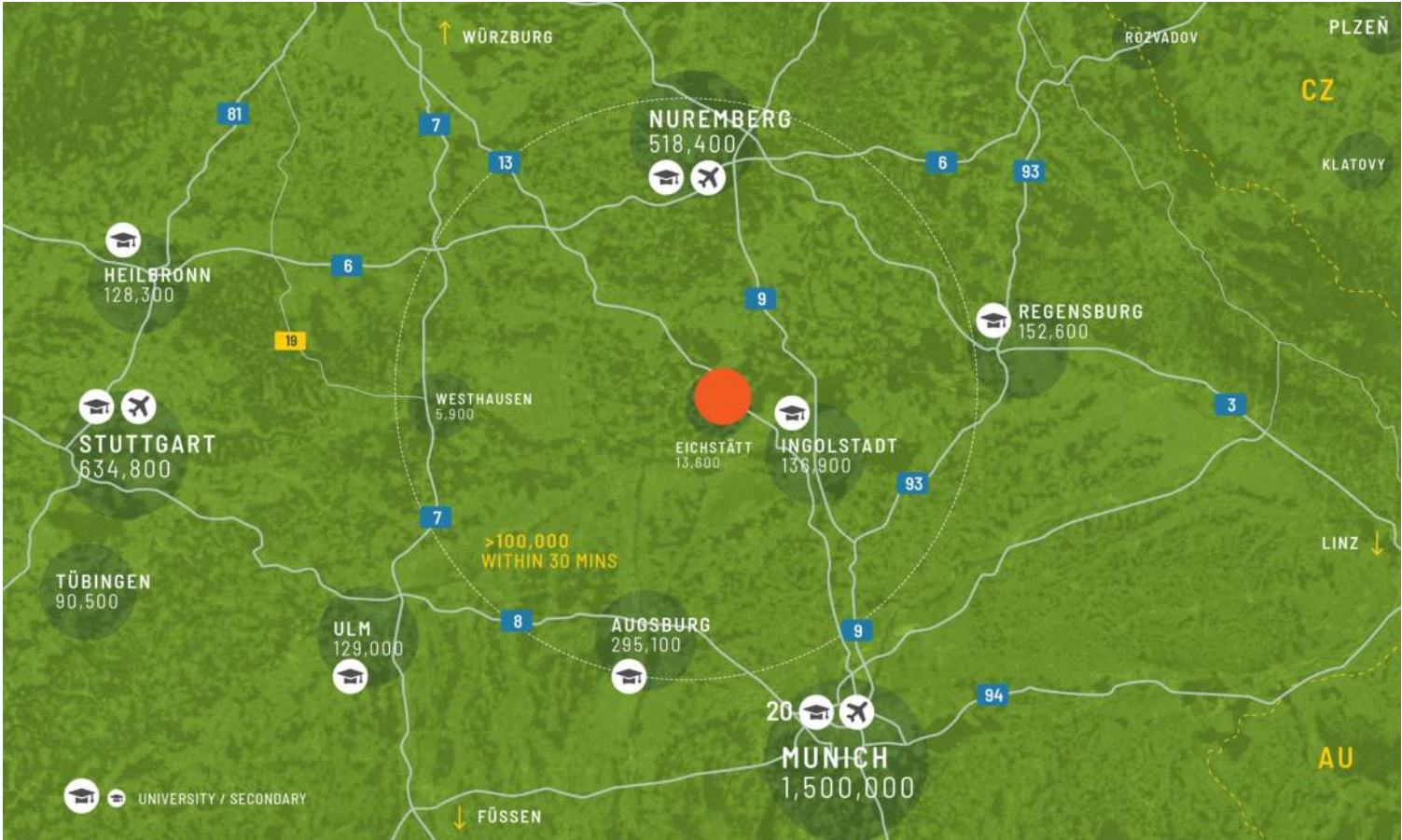
Economic and Educational Hub in Bavaria: Eichstätt's Diverse Business Environment

Eichstätt and its surroundings have a strong agricultural tradition but also host numerous small and medium-sized enterprises, particularly in tourism and services. The city is also home to educational institutions, including the Catholic University of Eichstätt-Ingolstadt, the only Catholic university in the German-speaking region. Infrastructure is well-developed, and with proximity to the B13 federal highway and connections to Ingolstadt and Nuremberg, Eichstätt is easily accessible by road.

- ▶ Location and Accessibility
- ▶ Local Skilled Workforce
- ▶ Strong Industries and Economic Sectors
- ▶ Sustainability and Ecological Responsibility



GRANDI CITTÀ		
Ingolstadt	26 km	32 min
Ausburg	71 km	1h 17min
Monaco	109 km	1h 24min

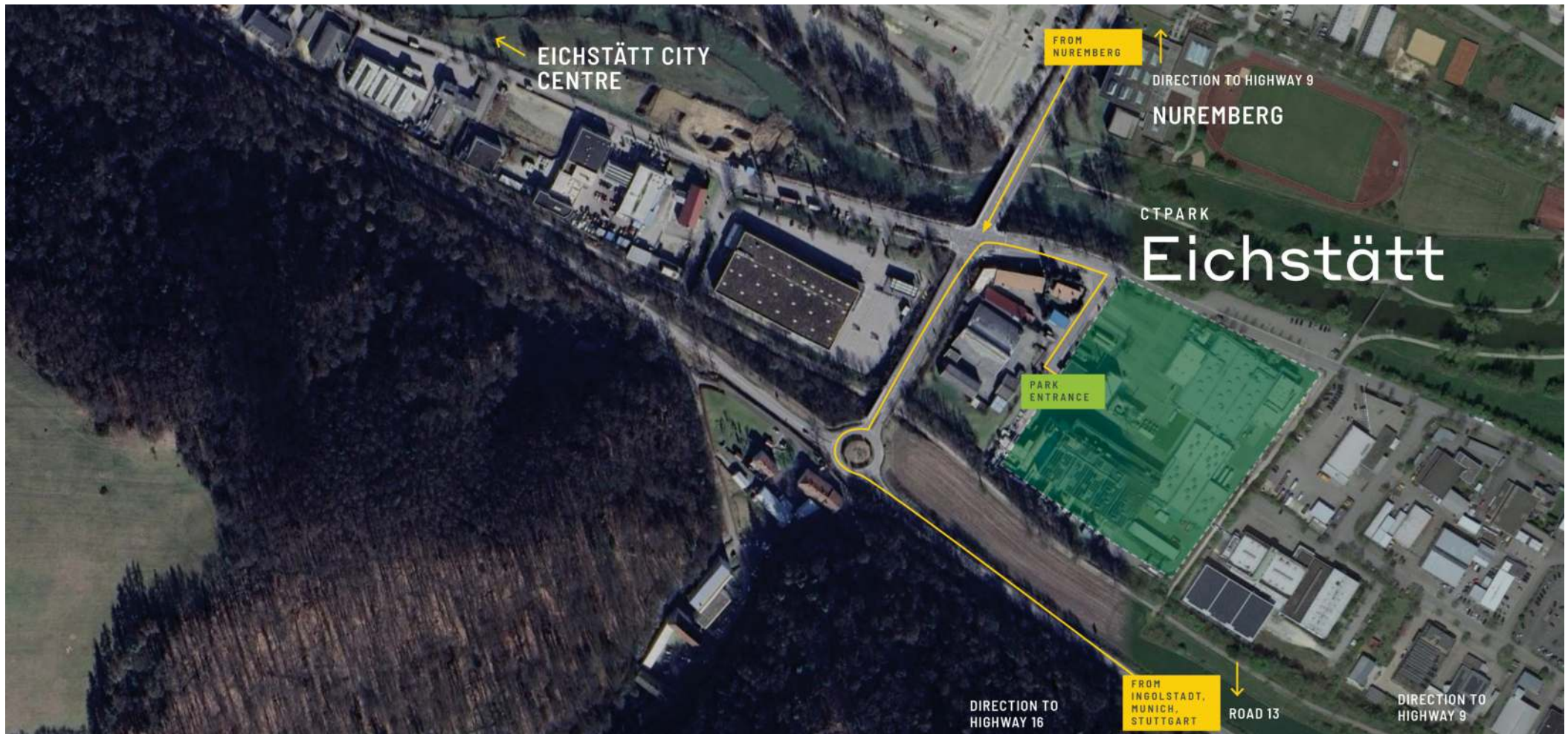


Eichstätt as a Business Location: Opportunities for SMEs in Bavaria

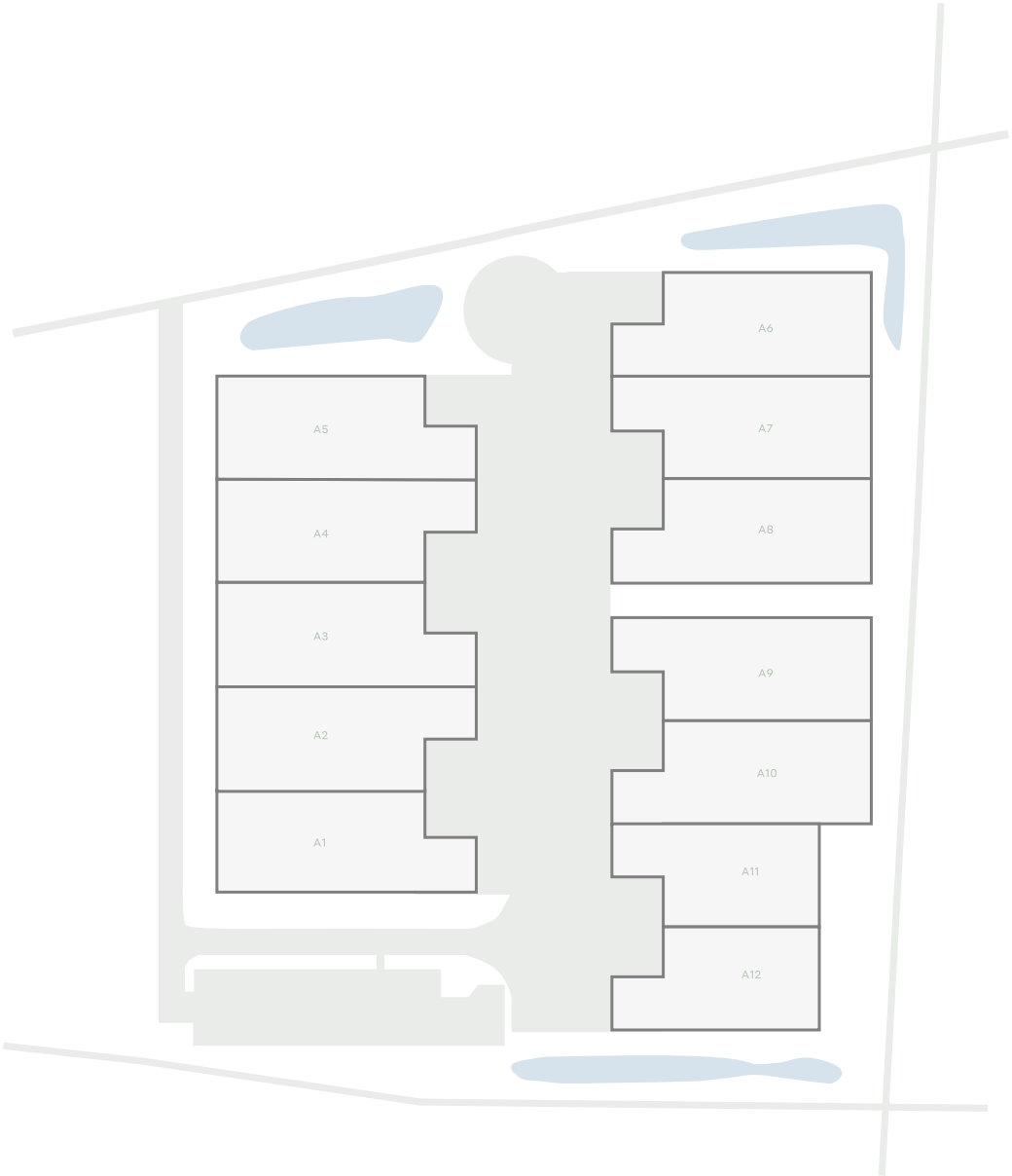
Eichstätt is an attractive business location in Bavaria, particularly for small and medium-sized enterprises (SMEs) in sectors like services, crafts, tourism, and education. Its central location provides strong road connections to major economic centers like Munich and Nuremberg, supporting efficient logistics. The presence of the Catholic University of Eichstätt-Ingolstadt offers companies access to skilled professionals and potential research partnerships. Eichstätt's economy is diversified, with tourism, agriculture, and established SMEs as key contributors.

CARATTERISTICHE DEL PARCO

- ▶ Location and Accessibility
- ▶ Local Skilled Workforce
- ▶ Strong Industries and Economic Sectors
- ▶ Sustainability and Ecological Responsibility



Industrial Site in Eichstätt:
Ideal for Business and
Logistics



DISPONIBILITÀ E CONSEGNA

Opportunità di sviluppo	13.248 m ²	Pianificato
A8	1.491 m ²	Pianificato
A9	1.491 m ²	Pianificato
A1	1.490 m ²	Pianificato
A5	1.479 m ²	Pianificato
A6	1.479 m ²	Pianificato
A10	1.455 m ²	Pianificato
A4	1.447 m ²	Pianificato
A3	1.447 m ²	Pianificato
A2	1.447 m ²	Pianificato
A7	1.447 m ²	Pianificato
A12	1.195 m ²	Pianificato
A11	1.159 m ²	Pianificato

- Costruito disponibile
- Pianificato
- Costruito occupato

DATI CHIAVE DEL PARCO

CTPark Eichstätt



1,5 KM



1,5 KM



2,5 KM



6 KM

DISPONIBILI ORA

0 m²

OPPORTUNITÀ DI SVILUPPO

30.275 m²

AREA EDIFICATA

0 m²

SUPERFICIE TOTALE

3,32 ha



ctp

ctPark NETWORK

WHERE YOU NEED TO BE

10 countries

TRACK RECORD OF SUCCESS

**13.8 mil. sqm
GLA**

SPACE FOR YOU TO GROW

**25.7 million sqm
landbank**

SPACE FOR YOU TO GROW

~1,500 clients

KEY

- CTParks
>100,000 sqm GLA
- CTP locations
<100,000 sqm GLA
- Mixed-use Parks
- Planned

MARKETS

- Core markets
- Growth markets
- Western European markets



Sandy Benz
Business Development &
Leasing Manager, South
Germany

+49 175 24 25 473
sandy.benz@ctp.eu

CONTATTAMI