



ctp



Cerhovice



CZ



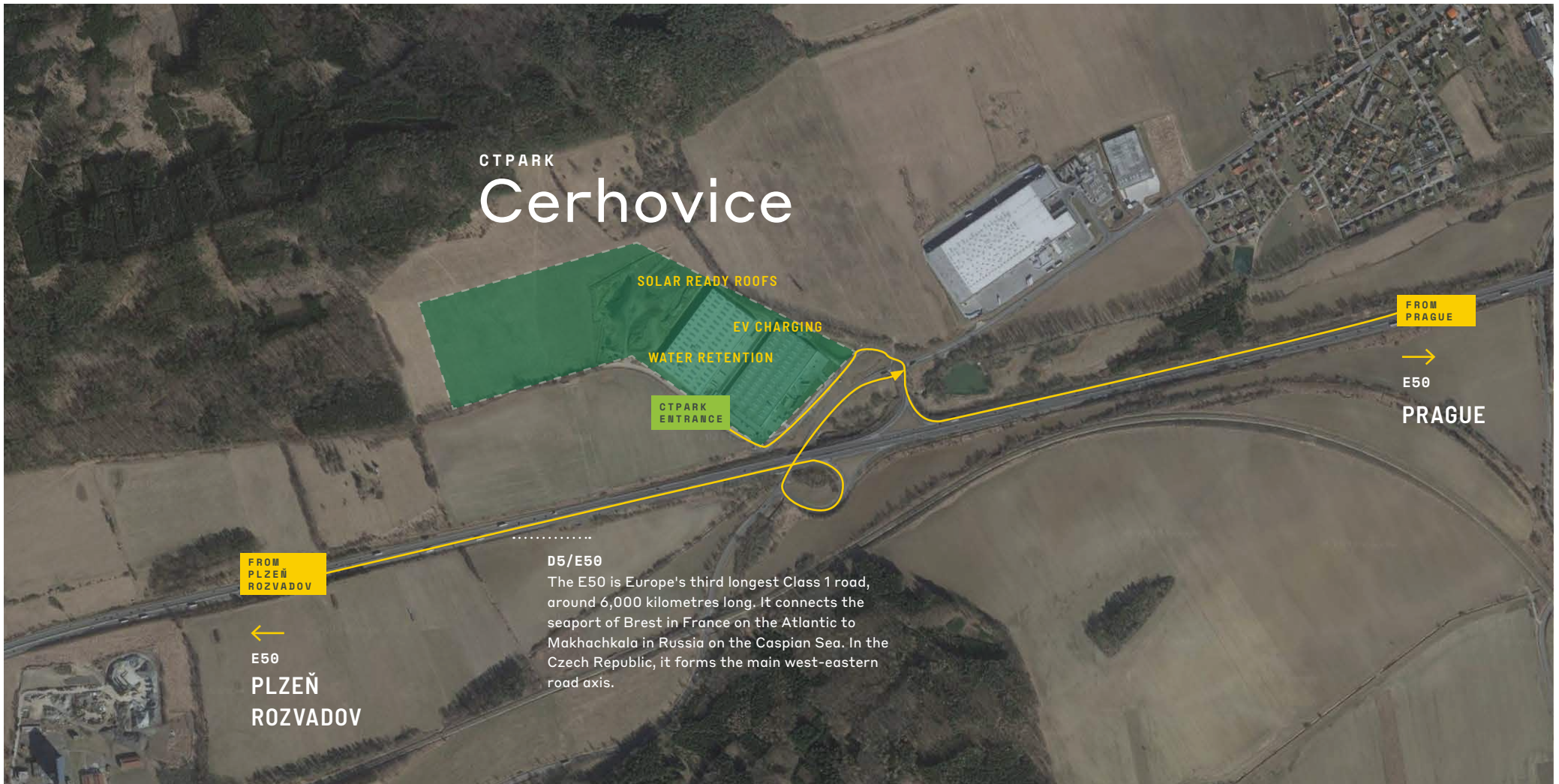
## LOCAL ACCESS

### Ensuring swift deliveries to wholesalers, retailers, and consumers

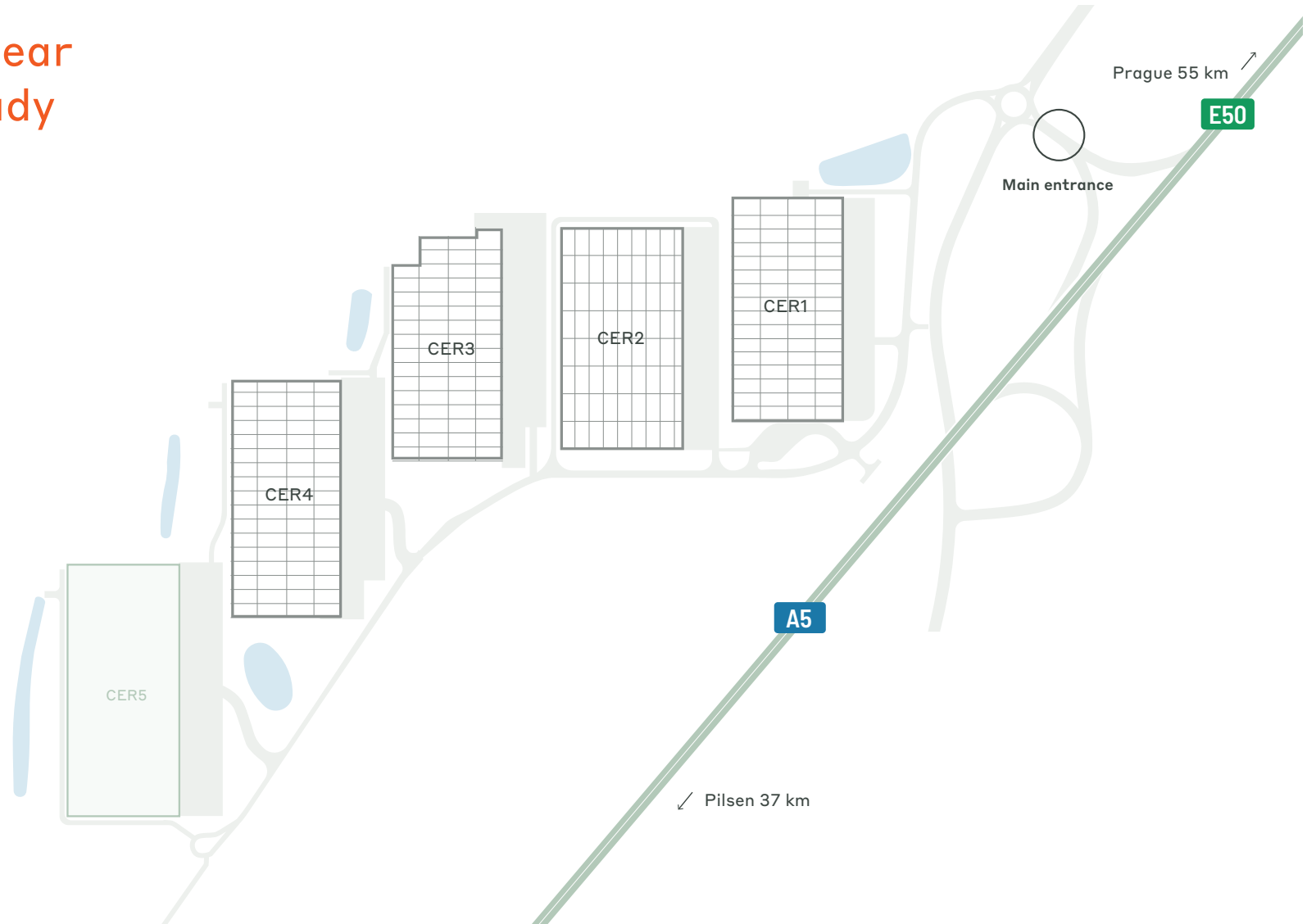
Nestled between Prague (50 km) and Plzeň (40 km), this central E50/D5 motorway location is perfect for logistics, supply chains, and light manufacturing. Offering strategic positioning with direct motorway access, it ensures swift deliveries to wholesalers, retailers, and consumers, complemented by extensive facilities and ample space for future growth.

## PARK FEATURES

- ▶ Solar ready roofs
- ▶ Water retention and reuse
- ▶ Elegant natural landscaping and biodiversity infrastructure
- ▶ Electric charging stations
- ▶ University within the area
- ▶ Market leading building and sustainability standards
- ▶ Universities in Prague and Pilsen






# Strategic Hub Near Prague with Ready Workforce



## AVAILABILITY & DELIVERY

CER5 - EA 2024    20,954 sqm    planned

-  Built available
-  Planned
-  Built occupied

KEY PARK DATA

# CTPark Cerhovice

AVAILABLE NOW

0 sqm

DEVELOPMENT OPPORTUNITY

21,000 sqm

BUILT-UP AREA

77,630 sqm

TOTAL AREA

9.69 ha



SOLAR READY ROOFS



WATER RETENTION AND RECYCLING



MEDICAL POINT IN CLOSE VICINITY



ELECTRIC CHARGERS



LANDSCAPED AREAS

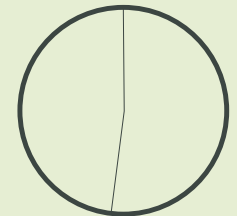
PARK & NEARBY INVESTORS

- Raben
- Mubea
- Valeo
- Famico
- Foodish

INDUSTRIES IN THE PARK

52% 3PL

48% Automotive





WHERE YOU NEED TO BE

10 countries

TRACK RECORD OF SUCCESS

11.8 million sqm  
GLA

SPACE FOR YOU TO GROW

23.4 million sqm  
landbank

LONG TERM PARTNER

>1,000 clients



**Jana Hain-Schmiedberská**  
Business Developer  
Czech Republic

+420 720 047 872  
jana.schmiedberska@ctp.eu  
ctp.eu

CONTACT ME

