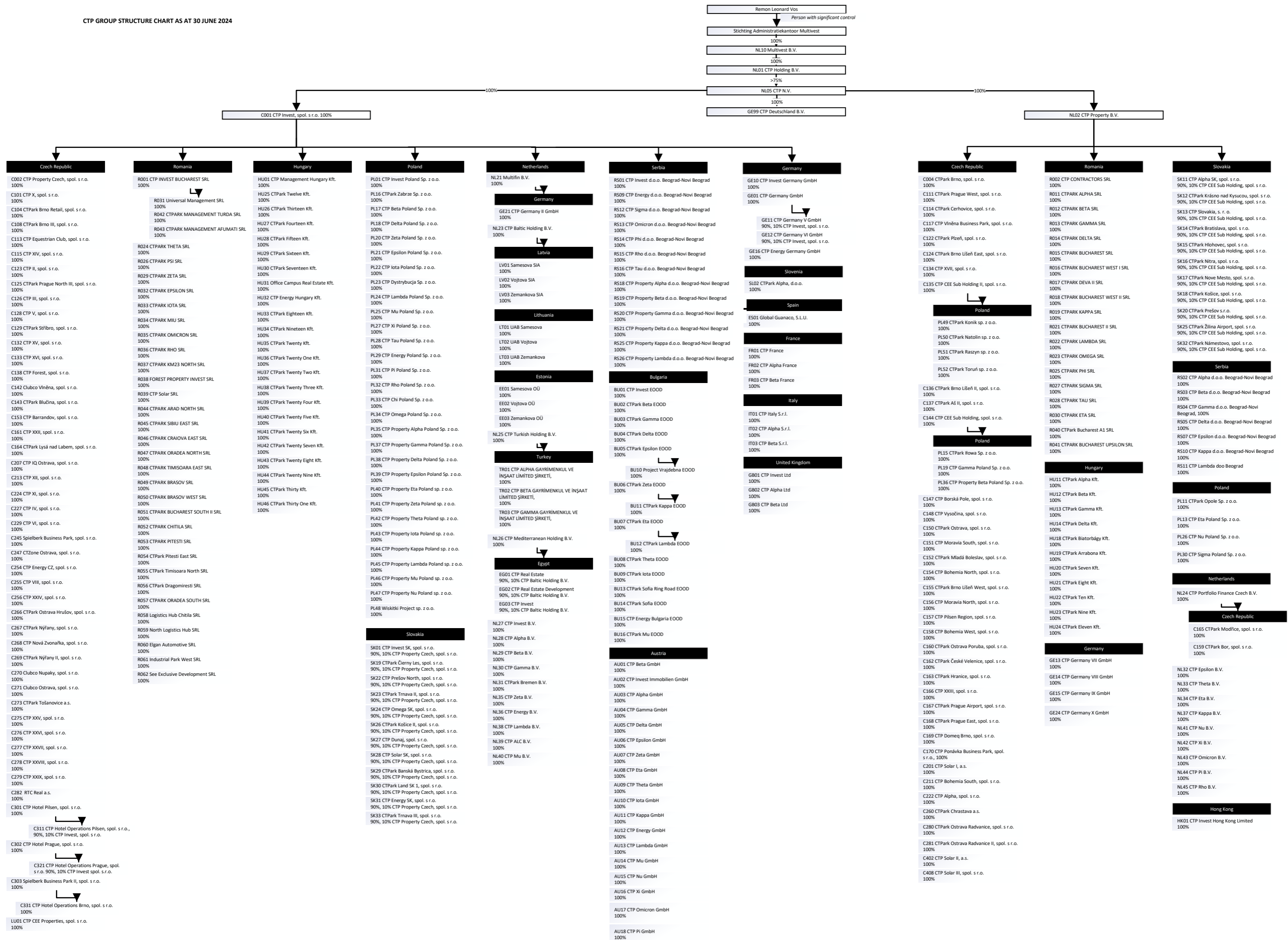


CTP GROUP STRUCTURE CHART AS AT 30 JUNE 2024



Remon Leonard Vos
 Person with significant control
 Stichting Administratiekantoor Multinvest
 100%
 NL10 Multinvest B.V.
 100%
 NL01 CTP Holding B.V.
 >75%
 NL05 CTP N.V.
 100%
 GE99 CTP Deutschland B.V.

C001 CTP Invest, spol. s r.o. 100%

NL02 CTP Property B.V.

Czech Republic

- C002 CTP Property Czech, spol. s r.o. 100%
- C101 CTP X, spol. s r.o. 100%
- C104 CTPark Brno Retail, spol. s r.o. 100%
- C108 CTPark Brno III, spol. s r.o. 100%
- C113 CTP Equestrian Club, spol. s r.o. 100%
- C115 CTP XIV, spol. s r.o. 100%
- C123 CTP II, spol. s r.o. 100%
- C125 CTPark Prague North III, spol. s r.o. 100%
- C126 CTP III, spol. s r.o. 100%
- C128 CTP V, spol. s r.o. 100%
- C129 CTPark Štřitbo, spol. s r.o. 100%
- C132 CTP XV, spol. s r.o. 100%
- C133 CTP XVI, spol. s r.o. 100%
- C138 CTP Forest, spol. s r.o. 100%
- C142 Clubco Vlněna, spol. s r.o. 100%
- C143 CTPark Blučina, spol. s r.o. 100%
- C153 CTP Barrandov, spol. s r.o. 100%
- C161 CTP XXII, spol. s r.o. 100%
- C164 CTPark Lysá nad Labem, spol. s r.o. 100%
- C207 CTP IQ Ostrava, spol. s r.o. 100%
- C213 CTP XII, spol. s r.o. 100%
- C224 CTP XI, spol. s r.o. 100%
- C227 CTP IV, spol. s r.o. 100%
- C229 CTP VI, spol. s r.o. 100%
- C245 Spielberk Business Park, spol. s r.o. 100%
- C247 CTZone Ostrava, spol. s r.o. 100%
- C254 CTP Energy CZ, spol. s r.o. 100%
- C255 CTP VIII, spol. s r.o. 100%
- C256 CTP XXIV, spol. s r.o. 100%
- C266 CTPark Ostrava Hrušov, spol. s r.o. 100%
- C267 CTPark Nýřany, spol. s r.o. 100%
- C268 CTP Nová Zvonařka, spol. s r.o. 100%
- C269 CTPark Nýřany II, spol. s r.o. 100%
- C270 Clubco Nupaky, spol. s r.o. 100%
- C271 Clubco Ostrava, spol. s r.o. 100%
- C273 CTPark Tošanovice a.s. 100%
- C275 CTP XXV, spol. s r.o. 100%
- C276 CTP XXVI, spol. s r.o. 100%
- C277 CTP XXVII, spol. s r.o. 100%
- C278 CTP XXVIII, spol. s r.o. 100%
- C279 CTP XXIX, spol. s r.o. 100%
- C282 RTC Real a.s. 100%
- C301 CTP Hotel Pilsen, spol. s r.o. 100%
- C311 CTP Hotel Operations Pilsen, spol. s r.o., 90%, 10% CTP Invest, spol. s r.o.
- C302 CTP Hotel Prague, spol. s r.o. 100%
- C321 CTP Hotel Operations Prague, spol. s r.o. 90%, 10% CTP Invest spol. s r.o.
- C303 Spielberk Business Park II, spol. s r.o. 100%
- C331 CTP Hotel Operations Brno, spol. s r.o. 100%
- LU01 CTP CEE Properties, spol. s r.o. 100%

Romania

- R001 CTP INVEST BUCHAREST SRL 100%
- R031 Universal Management SRL 100%
- R042 CTPARK MANAGEMENT TURDA SRL 100%
- R043 CTPARK MANAGEMENT AFUMATI SRL 100%
- R024 CTPARK THETA SRL 100%
- R026 CTPARK PSI SRL 100%
- R029 CTPARK ZETA SRL 100%
- R032 CTPARK EPSILON SRL 100%
- R033 CTPARK IOTA SRL 100%
- R034 CTPARK MIU SRL 100%
- R035 CTPARK OMICRON SRL 100%
- R036 CTPARK RHO SRL 100%
- R037 CTPARK KM23 NORTH SRL 100%
- R038 FOREST PROPERTY INVEST SRL 100%
- R039 CTP Solar SRL 100%
- R044 CTPARK ARAD NORTH SRL 100%
- R045 CTPARK SIBIU EAST SRL 100%
- R046 CTPARK CRAIOVA EAST SRL 100%
- R047 CTPARK ORADEA NORTH SRL 100%
- R048 CTPARK TIMISOARA EAST SRL 100%
- R049 CTPARK BRASOV SRL 100%
- R050 CTPARK BRASOV WEST SRL 100%
- R051 CTPARK BUCHAREST SOUTH II SRL 100%
- R052 CTPARK CHITILA SRL 100%
- R053 CTPARK PITESTI SRL 100%
- R054 CTPark Pitesti East SRL 100%
- R055 CTPark Timisoara North SRL 100%
- R056 CTPark Dragomiresti SRL 100%
- R057 CTPARK ORADEA SOUTH SRL 100%
- R058 Logistics Hub Chitila SRL 100%
- R059 North Logistics Hub SRL 100%
- R060 Elgan Automotive SRL 100%
- R061 Industrial Park West SRL 100%
- R062 See Exclusive Development SRL 100%

Hungary

- HU01 CTP Management Hungary Kft. 100%
- HU25 CTPark Twelve Kft. 100%
- HU26 CTPark Thirteen Kft. 100%
- HU27 CTPark Fourteen Kft. 100%
- HU28 CTPark Fifteen Kft. 100%
- HU29 CTPark Sixteen Kft. 100%
- HU30 CTPark Seventeen Kft. 100%
- HU31 Office Campus Real Estate Kft. 100%
- HU32 CTP Energy Hungary Kft. 100%
- HU33 CTPark Eighteen Kft. 100%
- HU34 CTPark Nineteen Kft. 100%
- HU35 CTPark Twenty Kft. 100%
- HU36 CTPark Twenty One Kft. 100%
- HU37 CTPark Twenty Two Kft. 100%
- HU38 CTPark Twenty Three Kft. 100%
- HU39 CTPark Twenty Four Kft. 100%
- HU40 CTPark Twenty Five Kft. 100%
- HU41 CTPark Twenty Six Kft. 100%
- HU42 CTPark Twenty Seven Kft. 100%
- HU43 CTPark Twenty Eight Kft. 100%
- HU44 CTPark Twenty Nine Kft. 100%
- HU45 CTPark Thirty Kft. 100%
- HU46 CTPark Thirty One Kft. 100%

Poland

- PL01 CTP Invest Poland Sp. z o.o. 100%
- PL16 CTPark Zabrze Sp. z o.o. 100%
- PL17 CTP Beta Poland Sp. z o.o. 100%
- PL18 CTP Delta Poland Sp. z o.o. 100%
- PL20 CTP Zeta Poland Sp. z o.o. 100%
- PL21 CTP Epsilon Poland Sp. z o.o. 100%
- PL22 CTP Iota Poland Sp. z o.o. 100%
- PL23 CTP Dystrybucja Sp. z o.o. 100%
- PL24 CTP Lambda Poland Sp. z o.o. 100%
- PL25 CTP Mu Poland Sp. z o.o. 100%
- PL27 CTP Xi Poland Sp. z o.o. 100%
- PL28 CTP Tau Poland Sp. z o.o. 100%
- PL29 CTP Energy Poland Sp. z o.o. 100%
- PL31 CTP Pi Poland Sp. z o.o. 100%
- PL32 CTP Rho Poland Sp. z o.o. 100%
- PL33 CTP Chi Poland Sp. z o.o. 100%
- PL34 CTP Omega Poland Sp. z o.o. 100%
- PL35 CTP Property Alpha Poland Sp. z o.o. 100%
- PL37 CTP Property Gamma Poland Sp. z o.o. 100%
- PL38 CTP Property Delta Poland Sp. z o.o. 100%
- PL39 CTP Property Epsilon Poland Sp. z o.o. 100%
- PL40 CTP Property Eta Poland Sp. z o.o. 100%
- PL41 CTP Property Zeta Poland Sp. z o.o. 100%
- PL42 CTP Property Theta Poland Sp. z o.o. 100%
- PL43 CTP Property Iota Poland Sp. z o.o. 100%
- PL44 CTP Property Kappa Poland Sp. z o.o. 100%
- PL45 CTP Property Lambda Poland Sp. z o.o. 100%
- PL46 CTP Property Mu Poland Sp. z o.o. 100%
- PL47 CTP Property Nu Poland Sp. z o.o. 100%
- PL48 Wiskitki Project sp. z o.o. 100%

Netherlands

- NL21 Multifin B.V. 100%
- NL23 CTP Baltic Holding B.V. 100%
- NL25 CTP Turkish Holding B.V. 100%
- NL26 CTP Mediterranean Holding B.V. 100%
- NL27 CTP Invest B.V. 100%
- NL28 CTP Alpha B.V. 100%
- NL29 CTP Beta B.V. 100%
- NL30 CTP Gamma B.V. 100%
- NL31 CTPark Bremen B.V. 100%
- NL35 CTP Zeta B.V. 100%
- NL36 CTP Energy B.V. 100%
- NL38 CTP Lambda B.V. 100%
- NL39 CTP ALC B.V. 100%
- NL40 CTP Mu B.V. 100%
- EG01 CTP Real Estate 90%, 10% CTP Baltic Holding B.V.
- EG02 CTP Real Estate Development 90%, 10% CTP Baltic Holding B.V.
- EG03 CTP Invest 90%, 10% CTP Baltic Holding B.V.

Serbia

- RS01 CTP Invest d.o.o. Beograd-Novi Beograd 100%
- RS09 CTP Energy d.o.o. Beograd-Novi Beograd 100%
- RS12 CTP Sigma d.o.o. Beograd-Novi Beograd 100%
- RS13 CTP Omicron d.o.o. Beograd-Novi Beograd 100%
- RS14 CTP Phi d.o.o. Beograd-Novi Beograd 100%
- RS15 CTP Rho d.o.o. Beograd-Novi Beograd 100%
- RS16 CTP Tau d.o.o. Beograd-Novi Beograd 100%
- RS18 CTP Property Alpha d.o.o. Beograd-Novi Beograd 100%
- RS19 CTP Property Beta d.o.o. Beograd-Novi Beograd 100%
- RS20 CTP Property Gamma d.o.o. Beograd-Novi Beograd 100%
- RS21 CTP Property Delta d.o.o. Beograd-Novi Beograd 100%
- RS25 CTP Property Kappa d.o.o. Beograd-Novi Beograd 100%
- RS26 CTP Property Lambda d.o.o. Beograd-Novi Beograd 100%
- BU01 CTP Invest EOOD 100%
- BU02 CTPark Beta EOOD 100%
- BU03 CTPark Gamma EOOD 100%
- BU04 CTPark Delta EOOD 100%
- BU05 CTPark Epsilon EOOD 100%
- BU10 Project Vrajdebna EOOD 100%
- BU06 CTPark Zeta EOOD 100%
- BU11 CTPark Kappa EOOD 100%
- BU07 CTPark Eta EOOD 100%
- BU12 CTPark Lambda EOOD 100%
- BU08 CTPark Theta EOOD 100%
- BU09 CTPark Iota EOOD 100%
- BU13 CTPark Sofia Ring Road EOOD 100%
- BU14 CTPark Sofia EOOD 100%
- BU15 CTP Energy Bulgaria EOOD 100%
- BU16 CTPark Mu EOOD 100%

Germany

- GE10 CTP Invest Germany GmbH 100%
- GE01 CTP Germany GmbH 100%
- GE11 CTP Germany V GmbH 90%, 10% CTP Invest, spol. s r.o.
- GE12 CTP Germany VI GmbH 90%, 10% CTP Invest, spol. s r.o.
- GE16 CTP Energy Germany GmbH 100%
- ES01 Global Guanaco, S.L.U. 100%
- FR01 CTP France 100%
- FR02 CTP Alpha France 100%
- FR03 CTP Beta France 100%
- IT01 CTP Italy S.r.l. 100%
- IT02 CTP Alpha S.r.l. 100%
- IT03 CTP Beta S.r.l. 100%
- GB01 CTP Invest Ltd 100%
- GB02 CTP Alpha Ltd 100%
- GB03 CTP Beta Ltd 100%
- AU01 CTP Beta GmbH 100%
- AU02 CTP Invest Immobilien GmbH 100%
- AU03 CTP Alpha GmbH 100%
- AU04 CTP Gamma GmbH 100%
- AU05 CTP Delta GmbH 100%
- AU06 CTP Epsilon GmbH 100%
- AU07 CTP Zeta GmbH 100%
- AU08 CTP Eta GmbH 100%
- AU09 CTP Theta GmbH 100%
- AU10 CTP Iota GmbH 100%
- AU11 CTP Kappa GmbH 100%
- AU12 CTP Energy GmbH 100%
- AU13 CTP Lambda GmbH 100%
- AU14 CTP Mu GmbH 100%
- AU15 CTP Nu GmbH 100%
- AU16 CTP Xi GmbH 100%
- AU17 CTP Omicron GmbH 100%
- AU18 CTP Pi GmbH 100%

Germany

- GE10 CTP Invest Germany GmbH 100%
- GE01 CTP Germany GmbH 100%
- GE11 CTP Germany V GmbH 90%, 10% CTP Invest, spol. s r.o.
- GE12 CTP Germany VI GmbH 90%, 10% CTP Invest, spol. s r.o.
- GE16 CTP Energy Germany GmbH 100%
- ES01 Global Guanaco, S.L.U. 100%
- FR01 CTP France 100%
- FR02 CTP Alpha France 100%
- FR03 CTP Beta France 100%
- IT01 CTP Italy S.r.l. 100%
- IT02 CTP Alpha S.r.l. 100%
- IT03 CTP Beta S.r.l. 100%
- GB01 CTP Invest Ltd 100%
- GB02 CTP Alpha Ltd 100%
- GB03 CTP Beta Ltd 100%

Czech Republic

- C004 CTP Invest Germany GmbH 100%
- C111 CTPark Prague West, spol. s r.o. 100%
- C114 CTPark Cerhovice, spol. s r.o. 100%
- C117 CTP Vlněna Business Park, spol. s r.o. 100%
- C122 CTPark Pízeň, spol. s r.o. 100%
- C124 CTPark Brno Líšeň East, spol. s r.o. 100%
- C134 CTP XVII, spol. s r.o. 100%
- C135 CTP CEE Sub Holding II, spol. s r.o. 100%
- PL49 CTPark Konik sp. z o.o. 100%
- PL50 CTPark Natolin sp. z o.o. 100%
- PL51 CTPark Raszyn sp. z o.o. 100%
- PL52 CTPark Toruń sp. z o.o. 100%
- C136 CTPark Brno Líšeň II, spol. s r.o. 100%
- C137 CTPark Aš II, spol. s r.o. 100%
- C144 CTP CEE Sub Holding, spol. s r.o. 100%
- PL15 CTPark Ilowa Sp. z o.o. 100%
- PL19 CTP Gamma Poland Sp. z o.o. 100%
- PL36 CTP Property Beta Poland Sp. z o.o. 100%

Romania

- R002 CTP CONTRACTORS SRL 100%
- R011 CTPARK ALPHA SRL 100%
- R012 CTPARK BETA SRL 100%
- R013 CTPARK GAMMA SRL 100%
- R014 CTPARK DELTA SRL 100%
- R015 CTPARK BUCHAREST SRL 100%
- R016 CTPARK BUCHAREST WEST I SRL 100%
- R017 CTPARK DEVA II SRL 100%
- R018 CTPARK BUCHAREST WEST II SRL 100%
- R019 CTPARK KAPPA SRL 100%
- R021 CTPARK BUCHAREST II SRL 100%
- R022 CTPARK LAMBDA SRL 100%
- R023 CTPARK OMEGA SRL 100%
- R025 CTPARK PHI SRL 100%
- R027 CTPARK SIGMA SRL 100%
- R028 CTPARK TAU SRL 100%
- R030 CTPARK ETA SRL 100%
- R040 CTPark Bucharest A1 SRL 100%
- R041 CTPARK BUCHAREST UPSILON SRL 100%

Slovakia

- SK11 CTP Alpha SK, spol. s r.o. 90%, 10% CTP CEE Sub Holding, spol. s r.o.
- SK12 CTPark Kráskovo nad Kysucou, spol. s r.o. 90%, 10% CTP CEE Sub Holding, spol. s r.o.
- SK13 CTP Slovakia, s. r. o. 90%, 10% CTP CEE Sub Holding, spol. s r.o.
- SK14 CTPark Bratislava, spol. s r.o. 90%, 10% CTP CEE Sub Holding, spol. s r.o.
- SK15 CTPark Hlohovec, spol. s r.o. 90%, 10% CTP CEE Sub Holding, spol. s r.o.
- SK16 CTPark Nitra, spol. s r.o. 90%, 10% CTP CEE Sub Holding, spol. s r.o.
- SK17 CTPark Nove Mesto, spol. s r.o. 90%, 10% CTP CEE Sub Holding, spol. s r.o.
- SK18 CTPark Košice, spol. s r.o. 90%, 10% CTP CEE Sub Holding, spol. s r.o.
- SK20 CTPark Prešov s.r.o. 90%, 10% CTP CEE Sub Holding, spol. s r.o.
- SK25 CTPark Žilina Airport, spol. s r.o. 90%, 10% CTP CEE Sub Holding, spol. s r.o.
- SK32 CTPark Námestovo, spol. s r.o. 90%, 10% CTP CEE Sub Holding, spol. s r.o.

Serbia

- RS02 CTP Alpha d.o.o. Beograd-Novi Beograd 100%
- RS03 CTP Beta d.o.o. Beograd-Novi Beograd 100%
- RS04 CTP Gamma d.o.o. Beograd-Novi Beograd 100%
- RS05 CTP Delta d.o.o. Beograd-Novi Beograd 100%
- RS07 CTP Epsilon d.o.o. Beograd-Novi Beograd 100%
- RS10 CTP Kappa d.o.o. Beograd-Novi Beograd 100%
- RS11 CTP Lambda doo Beograd 100%

Poland

- PL11 CTPark Opole Sp. z o.o. 100%
- PL13 CTP Eta Poland Sp. z o.o. 100%
- PL26 CTP Nu Poland Sp. z o.o. 100%
- PL30 CTP Sigma Poland Sp. z o.o. 100%

Netherlands

- NL24 CTP Portfolio Finance Czech B.V. 100%

Czech Republic

- C165 CTPark Modrice, spol. s r.o. 100%
- C159 CTPark Bor, spol. s r.o. 100%

Germany

- GE13 CTP Germany VII GmbH 100%
- GE14 CTP Germany VIII GmbH 100%
- GE15 CTP Germany IX GmbH 100%
- GE24 CTP Germany X GmbH 100%
- NL32 CTP Epsilon B.V. 100%
- NL33 CTP Theta B.V. 100%
- NL34 CTP Eta B.V. 100%
- NL37 CTP Kappa B.V. 100%
- NL41 CTP Nu B.V. 100%
- NL42 CTP Xi B.V. 100%
- NL43 CTP Omicron B.V. 100%
- NL44 CTP Pi B.V. 100%
- NL45 CTP Rho B.V. 100%

Hong Kong

- HK01 CTP Invest Hong Kong Limited 100%